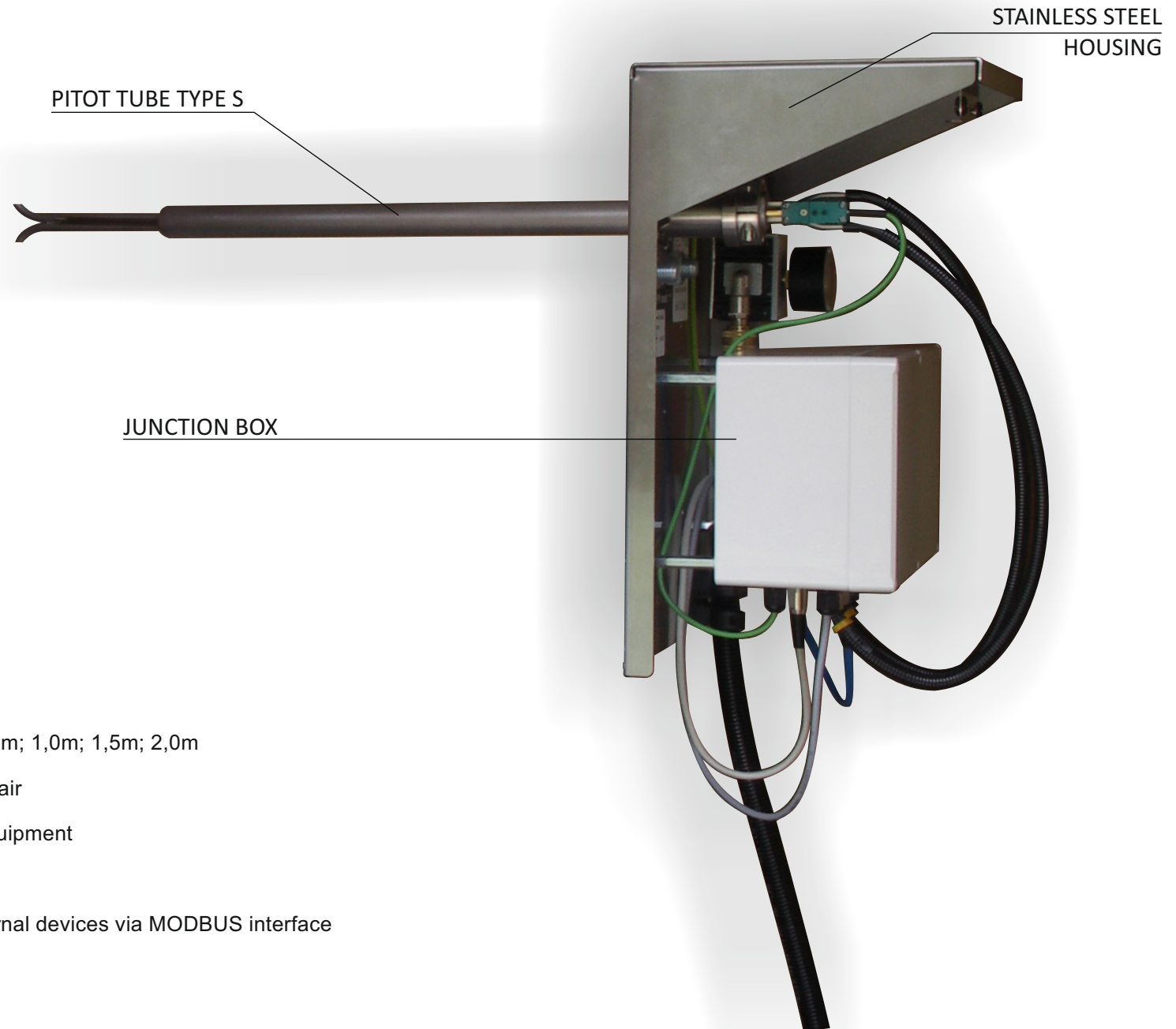


STATIONARY PITOT TUBE

with COMPRESSED AIR cleaning system **NEW!**

madur



FEATURES:

- S-Type Pitot - different lengths available: 0,5m; 1,0m; 1,5m; 2,0m
- Automatic cleaning option with compressed air
- Stainless steel housing for pitot tube and equipment
- ANSI flange mount holder
- Communication with mamos analyser / external devices via MODBUS interface

STATIONARY PITOT TUBE

madur

with COMPRESSED AIR cleaning system **NEW!**

ANSI flange 2" B16.5 150 Lbs
holder (mount base)

Pressure regulator

Lock mechanism



AISI 304 stainless
steel housing and cover



Junction box

STATIONARY PITOT TUBE

with COMPRESSED AIR cleaning system **NEW!**

madur

ANSI flange 2" B16.5 150 Lbs
holder (mount base)

Static and total
pressure ports

CPU board:
calculations,
MODBUS

Diferential pressure sensor

24VDC Power supply

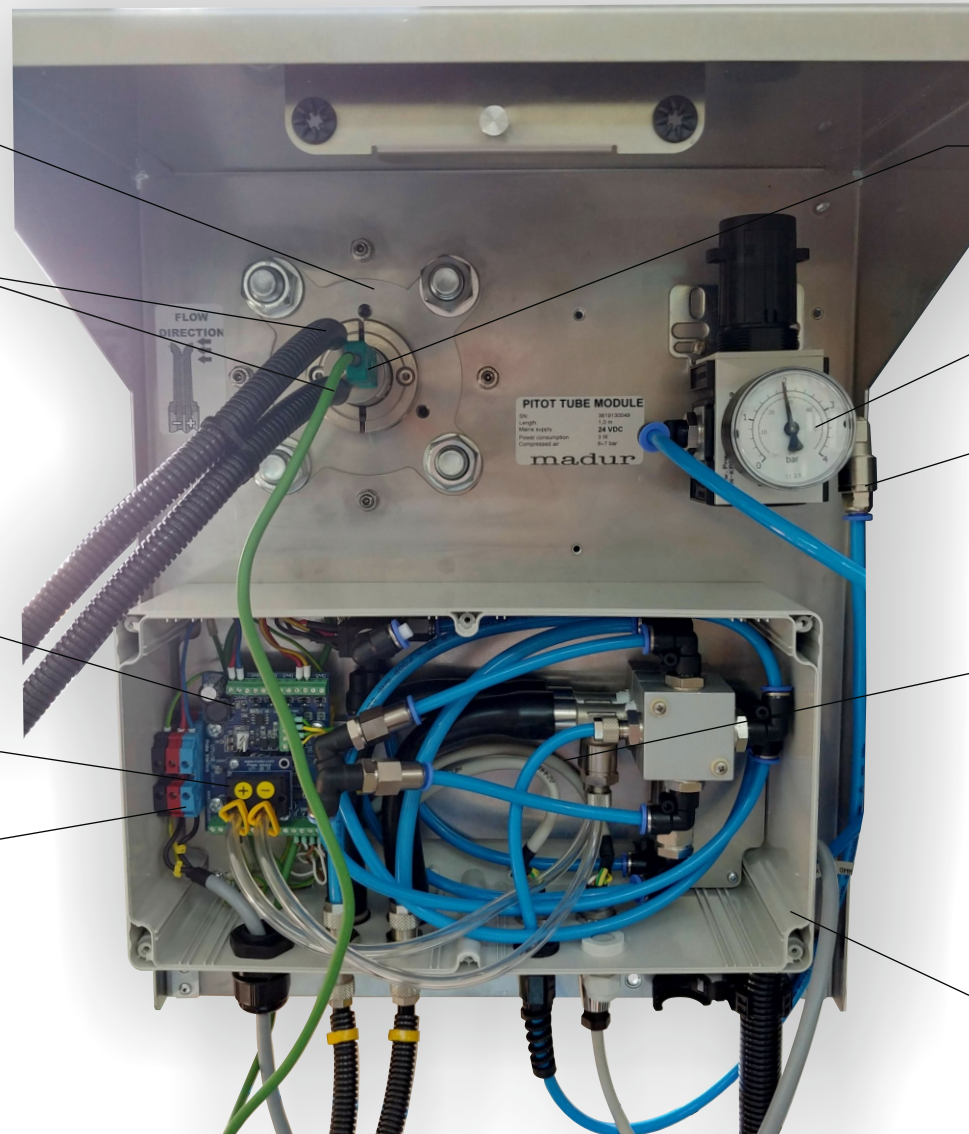
Temperature sensor

Pressure regulator

Compressed air
source connector

Pitot tube is cleaned with a burst of
compressed air. To protect sensitive
pressure sensor, it is being disabled
(for the cleaning period),
by a complex pneumatic system.

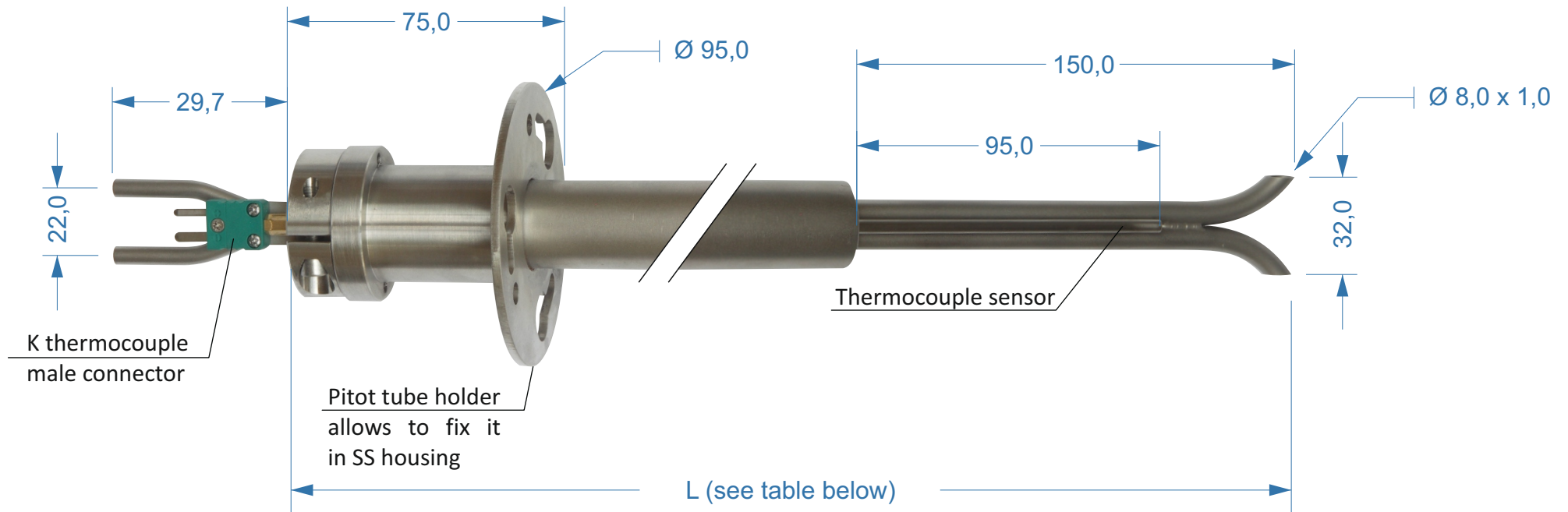
Junction box



STATIONARY PITOT TUBE

madur

with COMPRESSED AIR cleaning system **NEW!**

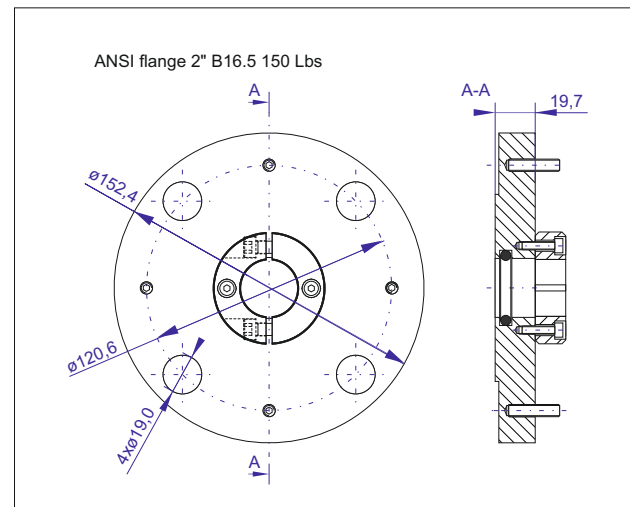
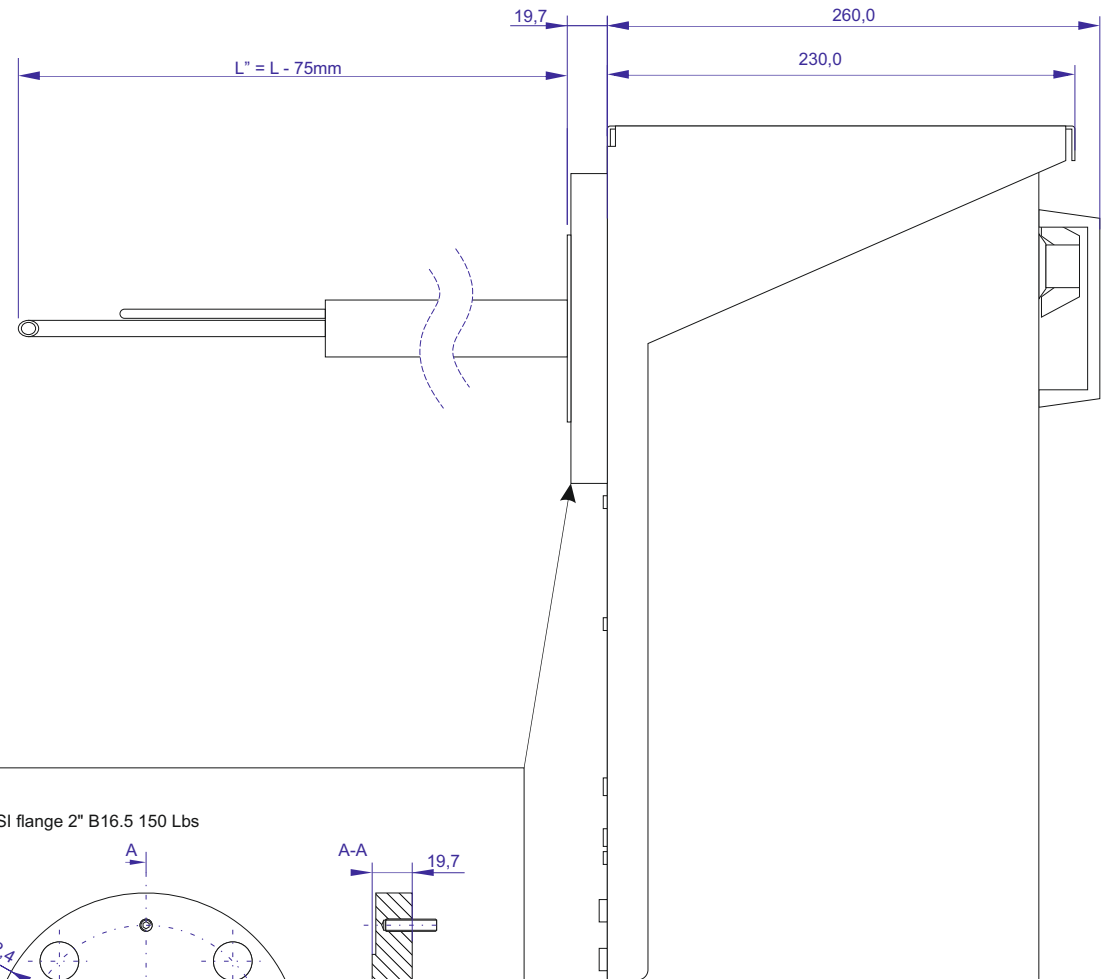
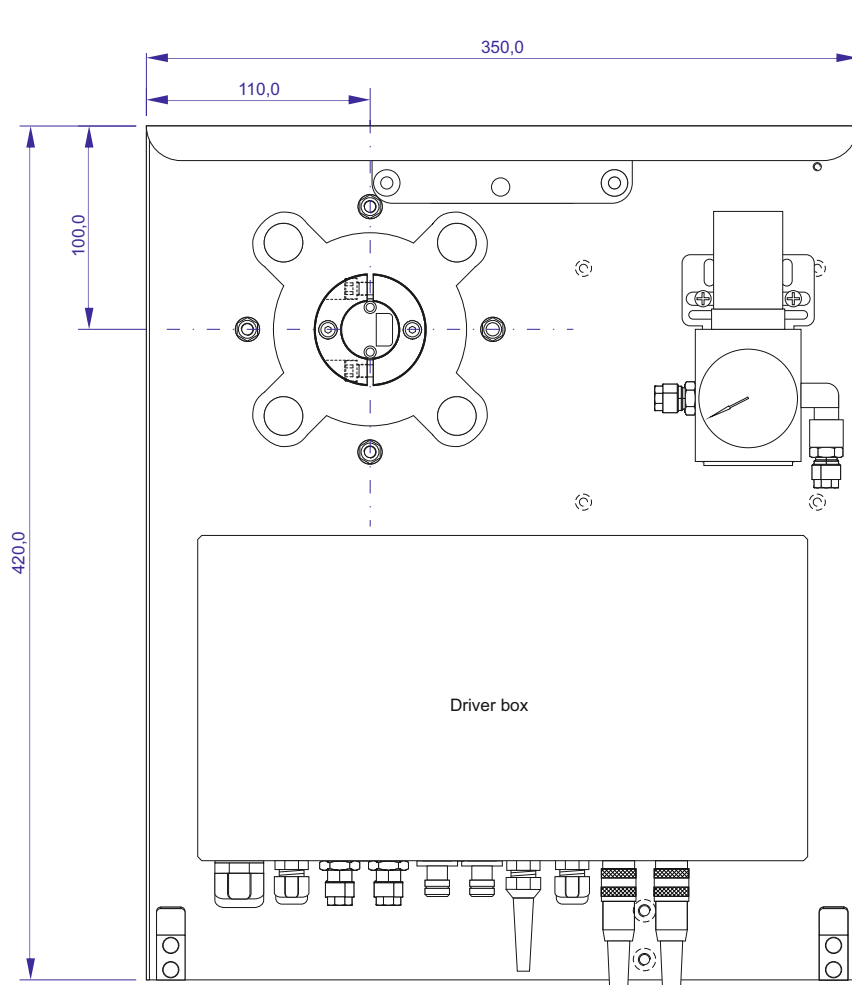


Length = L	500 mm; 1000 mm; 1500 mm; 2000 mm
Working temperature	0°C ÷ 1000°C
Measuring range	3 ÷ 85 m/s
Working temperature - pitot tube	0°C ÷ 1000°C
Material	AISI 316L stainless steel
S-type Pitot tube's coefficient	0,84 ± 0,01

STATIONARY PITOT TUBE

with COMPRESSED AIR cleaning system **NEW!**

madur



STATIONARY PITOT TUBE

madur

with COMPRESSED AIR cleaning system **NEW!**

